



# MMCTECH

SEED PROCESSING MACHINE & EQUIPMENTS  
AUTOMATION SOLUTIONS

Seed Conditioning And Processing Global Solution



## SCREW ELEVATORS

MMCTECH: Seed Machines & Equipment with Automation Solutions

[www.mmctech.us](http://www.mmctech.us)

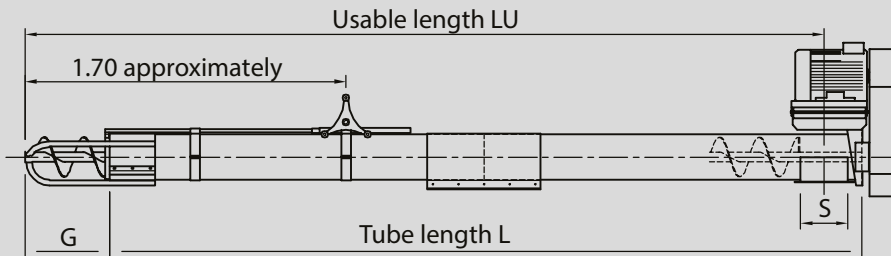
[info@mmctech.us](mailto:info@mmctech.us)



Performance

Type	SE 100	SE 125	SE 160	SE 200		SE 240	SE 300	SE 400
Maximum output in tons per hour at 45° (*)	7	14	25	35	45	50 - 65	100	250
Rotation speed (rpm)	725	900	580	435	543	414	325	325
Length L (m)	3 to 8	3 to 10	3 to 13	3 to 13		3 to 15	3 to 12	3 to 12
Maximum power (kW)	1.5	3	5.5	9		15	15	37

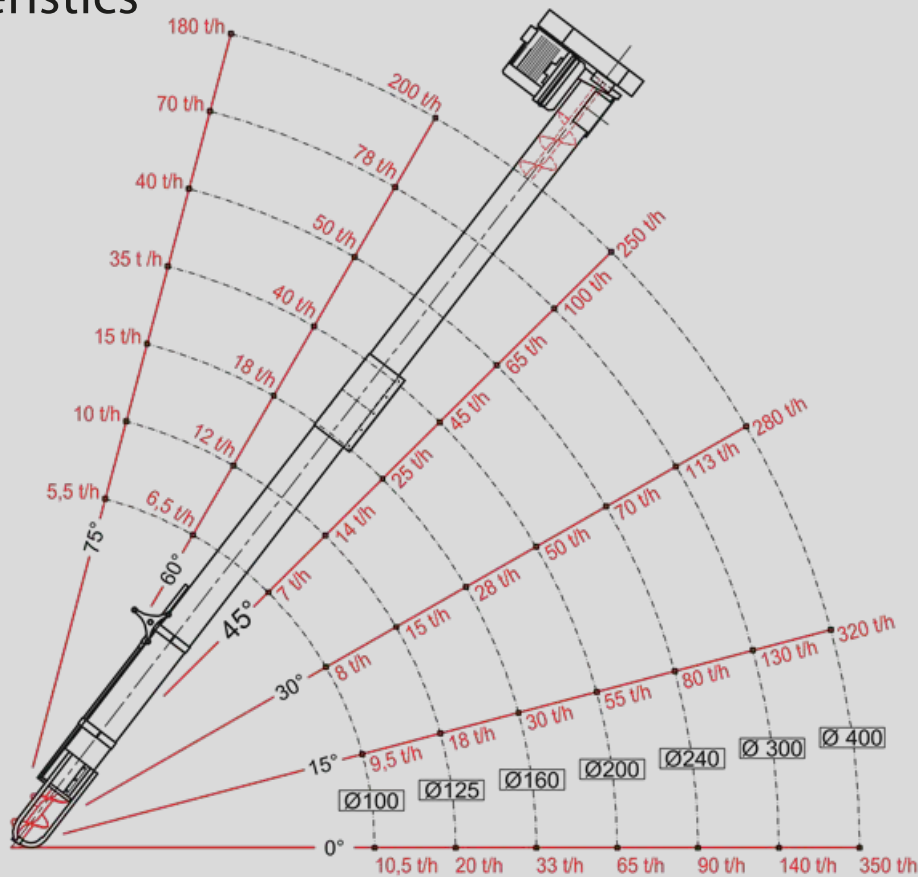
(\*) Using wheat (SW 0.75 Humidity 16 %)



Standard dimensions

Type	SE 100	SE 125	SE 160	SE 200	SE 240	SE 300	SE 400
External tube diameters (mm)	Ø 100	Ø 125	Ø 160	Ø 200	Ø 240	Ø 300	Ø 400
Tube length L (m)	3 to 8	3 to 10	3 to 13	3 to 13	3 to 15	3 to 12	3 to 12
Caged inlet length G (mm)	385	570	340	440	450	630	800
Caged inlet external diameter	Ø 180 mm	Ø 195 mm	Ø 240 mm	Ø 260 mm	Ø 305 mm	Ø 390 mm	Ø 550 mm
Usable length LU (m)	3.31 to 8.31	3.50 to 10.50	3.07 to 13.07	3.26 to 13.23	3.24 to 15.20	3.26 to 12.23	3.48 to 12.48
Exit aperture S (mm)	120 x 100	120 x 100	200 x 160	□200	□250	□250	500 x 400
Overall length (m)	3.46 to 8.46	3.65 to 10.65	3.34 to 13.34	3.60 to 13.57	3.61 to 15.57	3.82 to 12.79	4.41 to 13.41
Weight inclusive of motor (kg)	43.5 to 74	53.5 to 122	86 to 277	105 to 350	156 to 518	289 to 682	613 to 1878

# Characteristics



(Output indication using wheat (SW 0.75 Humidity 16 %))